



**DRY PRESSURE GAUGE
DN 40 & 50
WITH METALLIC CASE AND DOUBLE RANGE**

DRY PRESSURE GAUGE DN 40 AND 50 WITH METALLIC CASE AND DOUBLE RANGE BAR & PSI

Used with liquid or gaseous fluids that do not attack chemically the alloys of copper, not having a high viscosity and do not crystallize.

Their preferable application is in pneumatic and hydraulic circuits, compressors, filters, pressure regulators, climate and heating technology, and sanitary technology.

They are reliable and economical and manufactured according to EN-837-1. They comply with the CE Standard, pressure equipment directive 2014/68 / UE, PS> 200 bar; module A, pressure accessory.

Constructive and functional characteristics:

Accuracy:

2.5% according to EN 837-1.

Ranges: -1..0 to 0..40 bar or any other equivalent unit of pressure or vacuum, standard ranges according to DIN 16 128.

Room temperature: -20...+60°C.

Process fluid temperature: Max. +60°C

Temperature error:

Additional error when the temperature of the pressure element deviates from 20°C. +/-0,4% every 10 °C of change.

Working temperature: Maximum 75% of V.F.E.

Temporary overpressure: Not applicable

Process connection: in brass

Tubular spring: Phosphoric bronze. In "C" for ≥ 40 bar scales. In spiral for >40 bar scales

Case: Metallic painted in black.

Window: in transparent plastic.

Movement: in brass.

Pointer: in black lacquered aluminum.



Other options:

Tin-silver welding.

Glass window.

Others accuracy ranges.

Black painted steel cases

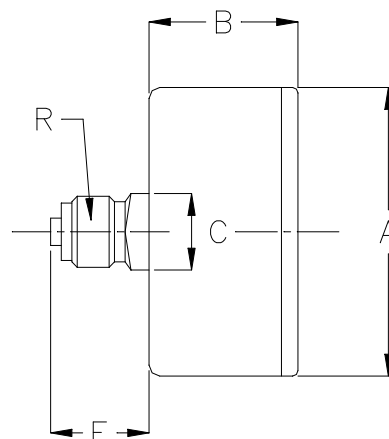
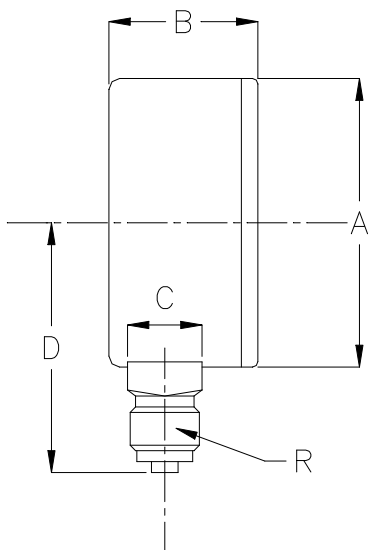
Other ranges like m.c.a, psi, MPa, etc

Red pointer with green area in window

This publication does not try to establish the bases of a contract and the company keeps the right to modify without previous notice the design and the specifications of the instruments, in accordance with his politics of continued development.

**DRY PRESSURE GAUGE
DN 40 & 50
WITH METALLIC CASE AND DOUBLE RANGE**

DIMENSIONS



RADIAL TYPE					
DN	A	B	C	D	R
40	42	25	11x11	27,5	1/8"
50	53	28	14x14	48	1/4"
63	63,5	28	14x14	51	1/4"

**DIMENSIONS
(mm)**

AXIAL TYPE					
DN	A	B	C	E	R
40	42	25	11x11	14	1/8"
50	53	28	14x14	19	1/4"
63	63,5	28	14x14	19	1/4"

This publication does not try to establish the bases of a contract and the company keeps the right to modify without previous notice the design and the specifications of the instruments, in accordance with his politics of continued development.