

# AMAXPRO





AMAXPRO

1

**S & W market status**

2

Requirements and expectations

3

Product concept

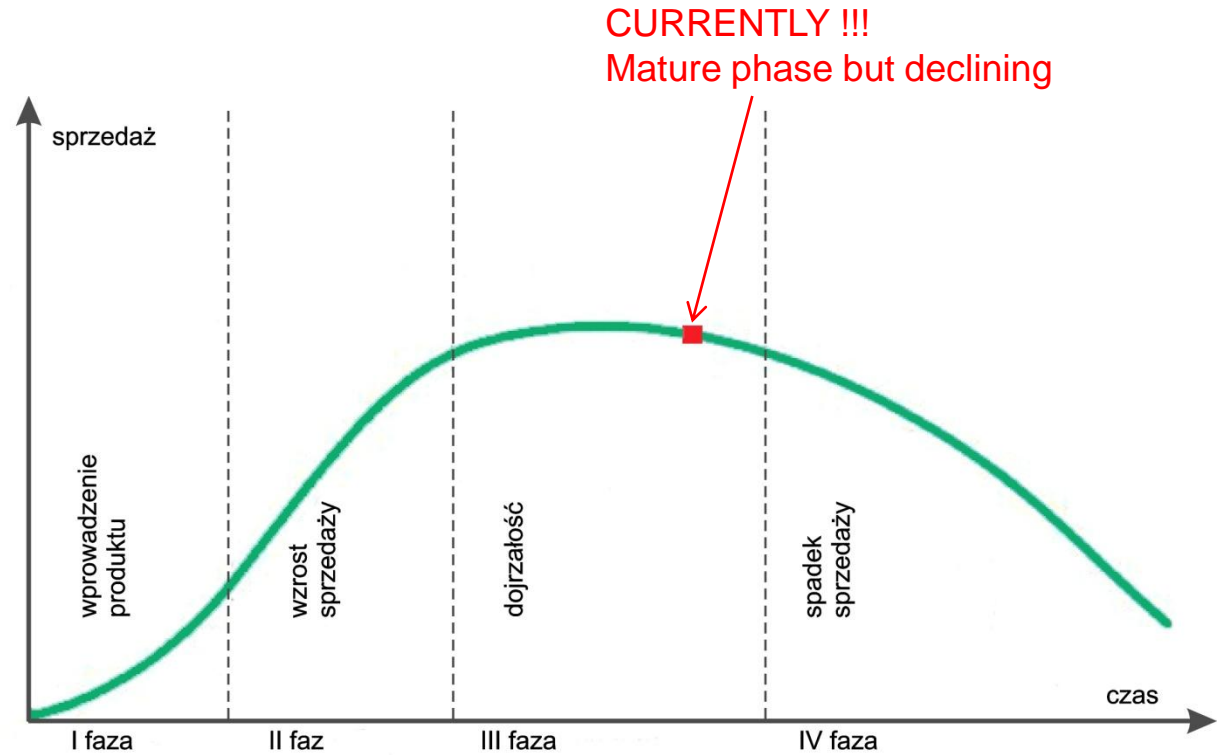
4

Positioning



AMAXPRO

## Life cycle of s &amp; w systems – current status





# AMAXPRO

## **POLIPLAST:** s & w current portfolio

- Over 20 years experience in PP plastics
- Diameters range 32 up to 110 mm
- Single layer PP-HT pipes
- Broad portfolio of fittings
- High tightness of push-fit connection
- Compliance with European Standard EN-1451





AMAXPRO

## s & w market perspectives

- Commoditization
- High competition
- Raw material cost increases
- Price, price, price...
- Low quality production
- Declining contribution



AMAXPRO

1

S & W market status

2

**Requirements and expectations**

3

Product concept

4

Positioning



# AMAXPRO

## Professional and safe S & W piping system requirements

### Wastes

- high temperature
- pipe stops during installation
- flow stops during exploitation



### Use and Maintenance

- low temperature installation
- storage in severe winter conditions
- durable and practical marking





AMAXPRO

## Professional and safe S & W piping systems requirements

- Innovative technology and formulation
- High quality
- Able to be positioned in project specifications
- Interesting for projects
- Different from competitors
- Enhancing contribution
- With supportive position from sales/projects organization





# AMAXPRO

1 S & W market status

2 Requirements and expectations

**3 Product concept**

4 Positioning

IN BLACK AND WHITE

## Three-layer pipe construction

### Internal layer

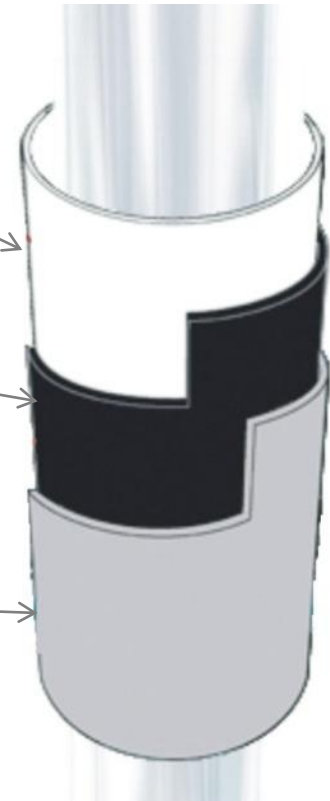
- white
- co-polymer PP
- high smoothness

### Intermediate layer

- black
- PP modified
- high stiffness and durability

### External layer

- grey
- c-polymer PP
- low temperature resistance



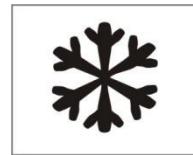
## New practical and technical properties



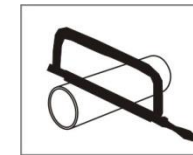
- High durability and stiffness



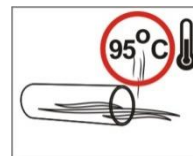
- Measurement scale



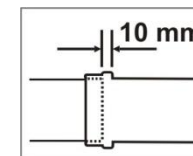
- Low temperature installation [-10°C]



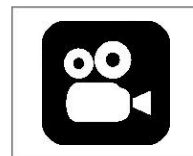
- Easy cutting



- High resistance to sewage temperature



- Linear expansion control scale



- Camera inspection possibility



AMAXPRO

IN BLACK AND WHITE

## HIGH DURABILITY

- Line stiffness ....
- Can be installed:
  - inside a building
  - in-concretete coverage
  - underground
- Fewer numbers of clamps



AMAXPRO

IN BLACK AND WHITE

## LOW TEMPERATURE RESISTANCE

- Installation below [-10°C]  
[forbidden for PP-HT]
- Safe storage and logistics in  
winter conditions
- Fewer damages and defects



IN BLACK AND WHITE

## HIHG TEMPERATURE RESITANCE

**90°C** constant, **95°C** temporal



- Washing machines
- Rinsing
- Straining



## CAMERA INSPECTION

diameters 50 – 110 mm

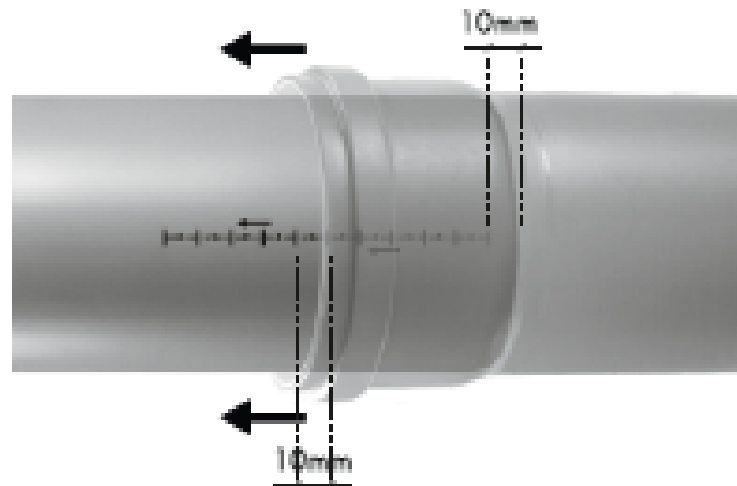
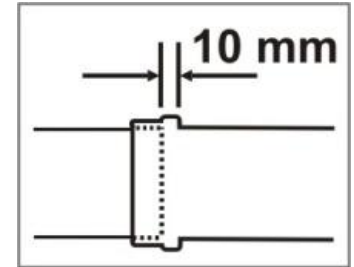
- Guaranty of cleanness after installment
- Safety maintenance



IN BLACK AND WHITE

## LINEAR EXPANSION CONTROL

- Dedicated scale on spigot
- Easy to pull 10 mm dilatation mark

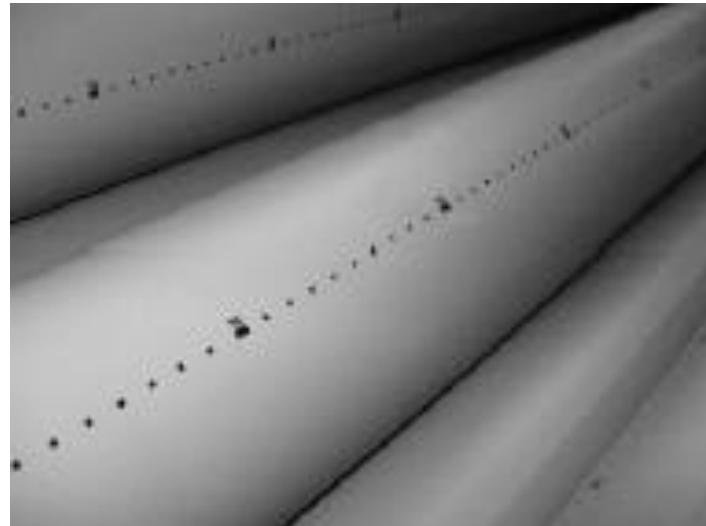
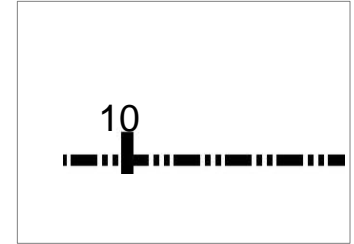




IN BLACK AND WHITE

## MEASUREMENT SCALE

- 10 mm scale
- Range of pipe lengths marked with scale  
- 0,5 do 6,0 m



AMAXPRO

Safety and durability in **S & W** piping systems

IN BLACK AND WHITE

**READABLE, PRACTICAL AND DURABLE MARKING**



**AMAX**



06-12-2012  
12:00/L:2/Z:2



AT-15-9046/2012  
Dimension EN 1451  
D.Z. 48/1 05-12-2012



1000mm kan wew PP-MD 3W 110x2.7  
POLIPLAST  
56-400 Olesnica, Energetyczna 6



**AMAXPRO**

**PRO**

10

10

10

IN BLACK AND WHITE

## AMAX PRO **IMAGE CAMPAIGN**

Nowoczesny i profesjonalny system kanalizacji wewnętrznej



### AMAX PRO

Bezpieczeństwo i komfort w kanalizacji  
CZARNO NA BIAŁYM



**POLIPLAST**  
TRWAŁE NA LATA

**POLIPLAST**

AMAX PRO





AMAXPRO

## POSE - 1



Stands „roll up”



Multimedia Wall 3x3m possible to LCD installment



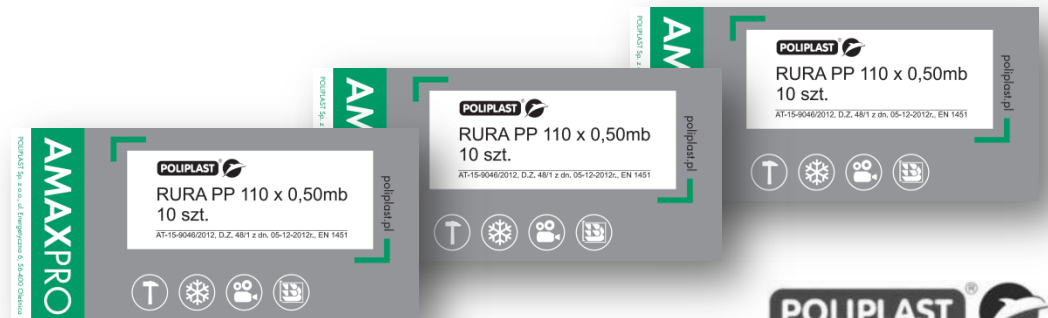
AMAXPRO

## POSE - 2



Longer pipes on pallets  
protected with plastic stretch

Stickers







AMAXPRO

## POSE - 3

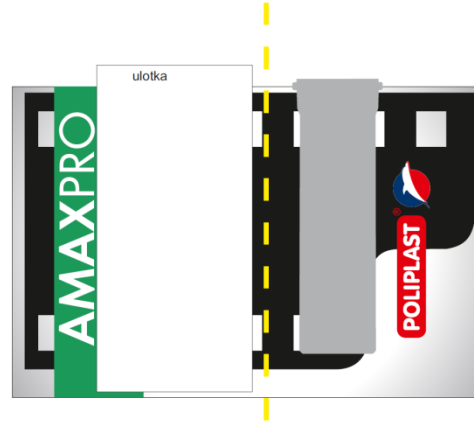


Samples bag



AMAXPRO

## POSE - 4



Board stand „L” – shaped  
with real pipe installed



MAXI advertise pallet - pipes [ Ø110

MINI advertise pallet - pipes Ø50



# AMAXPRO

## Marketing Documentation

**POLIPLAST**  
TRWAŁE NA LATA

**AMAXPRO**

Bezpieczeństwo i trwałość w kanalizacji  
**CZARNO NA BIAŁYM**

**NOWOŚĆ 2013**

**YOU CAN VIEW**

NOWOCZESNY I PROFESJONALNY system kanalizacji wewnętrznej

TRÓJWARSTWOWA KONSTRUKCJA RUROCIĄGU

**OPORNOŚĆ**

- odporność mechaniczna (zderzenia, parcia) [10°C]
- bezpieczny transport gorących ścieków +90°C [+105°C]
- przystosowanie do warunków atmosferycznych

**TRANSPARENTNOŚĆ**

- ścianki wykonane z polipropylenu
- łatwa kontrola jakości wykonanych prac
- szybka diagnostyka awarii i usterek

**PRĄTYCZNOŚĆ**

- promień gięcia [10cm] połączona kształtkowego
- kompensacja wybraków i wycieków
- możliwość doposażenia montażowego i eksploatacyjnego

**MOŻLIWOŚĆ MONTAŻU PIONOWEGO [90°]**

**MOŻLIWOŚĆ INSPEKCJI PRZEZ UŻYCIU KAMERY**

**KOMPENSACJA WYDRUŻEN DŁUGA 10mm**

**YOU CAN VIEW**

**POLIPLAST**  
TRWAŁE NA LATA

**POLIPLAST**  
WARSZAWA

Nowoczesny i profesjonalny system kanalizacji wewnętrznej

**AMAXPRO**

Bezpieczeństwo i trwałość w kanalizacji  
**CZARNO NA BIAŁYM**

**YOU CAN VIEW**

**POLIPLAST**  
TRWAŁE NA LATA

**POLIPLAST Sp. z o.o.**  
Warszawa 7  
52-400 Oleśnica  
tel. 71/299 56 00, fax 71/299 56 01  
www.poliplast.pl / biuro@poliplast.pl

**YOU CAN VIEW**

## Technical Catalogue

Leaflet - A4





# AMAXPRO

- 1 S & W market status
- 2 Requirements and expectations
- 3 Product concept
- 4 Positioning**



AMAXPRO

## PRODUCT POSITIONING

IN BLACK AND WHITE

