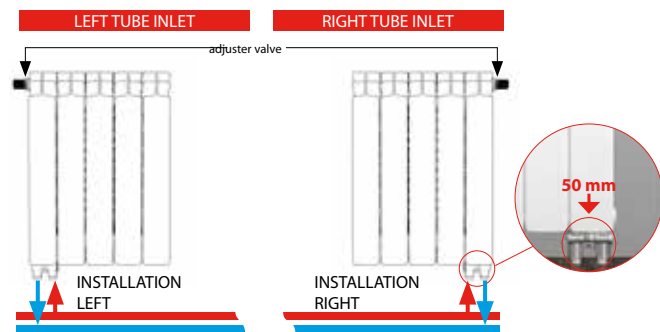


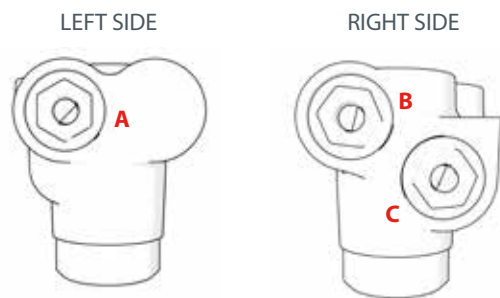
POSSIBILITY OF HYDRAULIC CONNECTION BOTH ON THE LEFT AND RIGHT SIDE

The kit supplied by Fondital must be connected to the heating system so as to have the return circuit on radiator outer side. Flow water will thus be conveyed towards the upper side of the element to which the kit is connected, it will then pass through the adjuster valve, and finally evenly distribute inside the whole radiator. Fondital supplies their customers with a complete kit, which can prove useful both for **right and left installation**.



SEVERAL HEAT INPUT SETTINGS

The different heat input settings, visible on valve side, allow modulating circuit with **3 settings** until fully closing flow, return and bypass * lines.



A	FLOW
B	RETURN
C*	BY-PASS

* for model with Bypass line only.

The manufacturer reserves the right to carry out the necessary changes without prior notice.

 **fondital**
BE INNOVATIVE ● ○ ●



Uff. Pub. Fondital - CTC03 P.495 - 01 Ottobre 2018 (10/2018)

FONDITAL S.p.A.
Via Cerreto, 40 - 25079 VOBARNO (Brescia)
Tel.: +39 0365 878.31 - Fax: +39 0365 878,304
E-mail: info@fondital.it - Web: www.fondital.com

COMPANY WITH
QUALITY SYSTEM
CERTIFIED BY DNV GL
= ISO 9001 =

 **fondital**
BE INNOVATIVE ● ○ ●

Blitz
SUPER B 4

Aluminium radiator with bottom connection



NEW PRODUCT

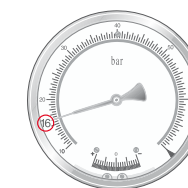


EN

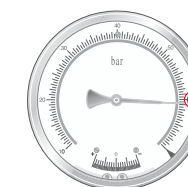
www.fondital.com

THE IDEAL REPLACEMENT OF OLD SYSTEMS WITH STEEL PLATE RADIATORS

Today Fondital aluminium radiator, pre-set with bottom connection kit, becomes the ideal replacement of old steel-plate radiator systems. This new system renews the heating market as aluminium radiators have their undeniable advantage, such as: **low thermal inertia, use in low-temperature systems and easy installation.**



Operating pressure
16 bar



Peak pressure tested to
60 bar

COMPLETE KIT EASY TO INSTALL

With this kit, the traditional Fondital aluminium radiator can be connected to a system equipped with 50-mm pitch bottom or wall connections. By purchasing the special right or left element and the most suitable valve for your system, you can obtain a radiator with connections on the right or left side to floor or wall. The valve connections feature a 50-mm pitch with 3/4 Eurocone threads. The kit also includes a thermostatic valve to which an easily purchasable thermostatic head can be connected.

EXCLUSIVE PATENT

KIT COMPOSITION:

A = RADIATOR MODEL

RADIATOR WITH RIGHT BOTTOM CONNECTION

- ✓ ELEMENT: RADIATOR MODEL WITH ACCESSORY KIT INCLUDED RH BOTTOM CONNECTION **(A)**
- ✓ VALVE KIT **(C)** (TO BE ORDERED SEPARATELY)

RADIATOR WITH LEFT BOTTOM CONNECTION

- ✓ ELEMENT: RADIATOR MODEL WITH ACCESSORY KIT INCLUDED LH BOTTOM CONNECTION **(B)**
- ✓ VALVE KIT **(C)** (TO BE ORDERED SEPARATELY)

UPPER VALVE

520215M RH-LH VALVE BOTTOM TO WALL CONNECTION KIT

520216P RH-LH VALVE BOTTOM TO FLOOR CONNECTION KIT

520205DS RH-LH VALVE BOTTOM CONNECTION KIT WITH BYPASS



BLITZ SUPER B4 BOTTOM CONNECTION	Code	Depth	Height	Center distance	Width	Connections diameter	Water content	Head output ΔT 30 K	Head output ΔT 50 K	Exp. n	Coeff. Km
		mm	mm	mm	mm	inches	litres/elem.	W/el.	W/el.		
350/100 DX	V693014DX	97	407	350	80	G1	0,24	48,0	92,4	1,2818	0,6139
350/100 SX	V693014SX	97	407	350	80	G1	0,24	48,0	92,4	1,2818	0,6139
500/100 DX	V693034DX	97	557	500	80	G1	0,27	63,7	124,0	1,3027	0,7587
500/100 SX	V693034SX	97	557	500	80	G1	0,27	63,7	124,0	1,3027	0,7587
600/100 DX	V693044DX	97	657	600	80	G1	0,29	73,8	143,5	1,3015	0,8822
600/100 SX	V693044SX	97	657	600	80	G1	0,29	73,8	143,5	1,3015	0,8822
700/100 DX	V693054DX	97	757	700	80	G1	0,35	82,6	162,5	1,3238	0,9155
700/100 SX	V693054SX	97	757	700	80	G1	0,35	82,6	162,5	1,3238	0,9155
800/100 DX	V693064DX	97	857	800	80	G1	0,38	90,3	178,2	1,3301	0,9896
800/100 SX	V693064SX	97	857	800	80	G1	0,38	90,3	178,2	1,3301	0,9896

	Model	Code
	RH-LH VALVE BOTTOM TO WALL CONNECTION KIT - H-valve with 50-mm pitch - 3/4 Eurocone threads - Material nickel-plated brass with check valve - With screws/O-rings to install bottom connection element	520215M
	RH-LH VALVE BOTTOM TO FLOOR CONNECTION KIT - H-valve with 50-mm pitch - 3/4 Eurocone threads - Material nickel-plated brass with check valve - With screws/O-rings to install bottom connection element	520216P
	RH-LH VALVE BOTTOM CONNECTION KIT WITH BYPASS - H-valve with 50-mm pitch - 3/4 Eurocone threads - Material nickel-plated brass with closing device and adjustable bypass - With screws/O-rings to install bottom connection element - Adjustable bypass for single-pipe system	520205DS

CODE OBTAINING EXAMPLE

Radiator **Blitz Super B4 600** with 10 elements, including **RH** bottom connection element and **VALVE WITH BYPASS**:

	RADIATOR WITH 9 ELEMENTS	RIGHT ELEMENT	VALVE KIT WITH BYPASS
CODES TO BE ORDERED	V69304409	V693044DX	520205 DS

