

STANDARD MANOTHERMOMETERS DN 80

We can use in liquids or gases chemical compatibles with cooper alloy, without high viscosity and no crystallize.

Its normal use is in pneumatic or hydraulic circuits, compressors, filters and pressure regulators . they are made by CE Norm

Construction and functional Characteristics

Accuracy: Class 1,6 by EN 837-1 Y EN 13.190.

Ranges: 0..6 bar y 0...+ 120 °C.

Ambient Temperature : -20...+60°C.

Process Fluid Temperature: max. +120°C.

Temperature mistake:

In the pressure measure it has an extra mistake when the sensor is not at 20°C.

The extra mistake is +/- 0,3 % each 10 °C variation.

Work pressure: Max. 75% of end scale value E.S.V.

Temporally overpressure: No applicable

Thread process connection: 1/2" BSP Brass.

Pressure sensor: "C" form phosphoric bronze for ranges ≤ 40 bar.

Ring and case: Black painted steel case . Chromed ring.

window: Plastic window.

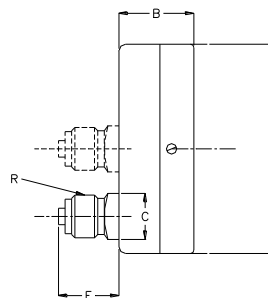
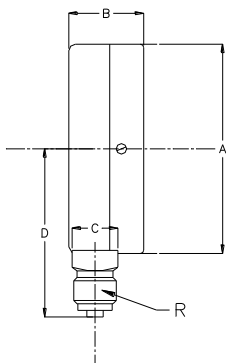
Mechanism: Brass.

Pointer: black painted aluminum.



Esta publicación no pretende sentar las bases de un contrato y la empresa se reserva el derecho de modificar sin previo aviso el diseño y las especificaciones de los instrumentos, de acuerdo con su política de continuo desarrollo.

DIMENSIONS



VERTICAL TYPE					
DN	A	B	C	D	R
80	81	36	22	98	1 / 2

**DIMENSIONS
(mm)**
CENTERED CONNECTION

BACK TYPE					
DN	A	B	C	E	R
80	81	34	22	57	1 / 2

Esta publicación no pretende sentar las bases de un contrato y la empresa se reserva el derecho de modificar sin previo aviso el diseño y las especificaciones de los instrumentos, de acuerdo con su política de continuo desarrollo.