

# Braukmann

## FK74CS-LF/FKN74CS-LF

### Lead-free filter combination

with pressure reducing valve and reverse rinsing fine filter

#### Application

The filter combinations comprise reverse rinsing filter and pressure reducing valve in one appliance. They ensure a continuous supply of filtered water. The fine filter stops the ingress of foreign bodies, for example rust particles, strands of hemp and grains of sand and thus reduces the probability of corrosion. The pressure reducing valve prevents pressure damage and reduces water consumption.

The filter combinations are fitted in systems where a pressure reducing valve is required. Both horizontal and vertical installation is possible.

#### Approvals

- DVGW

approval for all filters with 100 µm mesh sizes and with rotatable connection piece

#### Special Features

- LEAD-FREE: Pb content of all materials less than 0.1 %
- Integral pressure reducing valve with balanced seat
- Inlet pressure balancing – no influence on outlet pressure by fluctuating inlet pressure
- Filtered water supplied even during reverse rinsing
- Patented reverse rinsing system - fast and thorough cleaning of the filter with small amount of water
- Memory ring indicates when next manual reverse rinsing is due
- Automatic reverse rinsing actuator with ISO-flange connector can be retrofitted
- Large filter surface
- Shock resistant clear synthetic material filter bowl enables easy checking of filter contamination
- Filter insert fully replaceable
- Standardised discharge connection
- ACS certified
- All materials are KTW approved
- Approved by TÜV LGA for low noise, Group 1 without limitations
- 5-year warranty

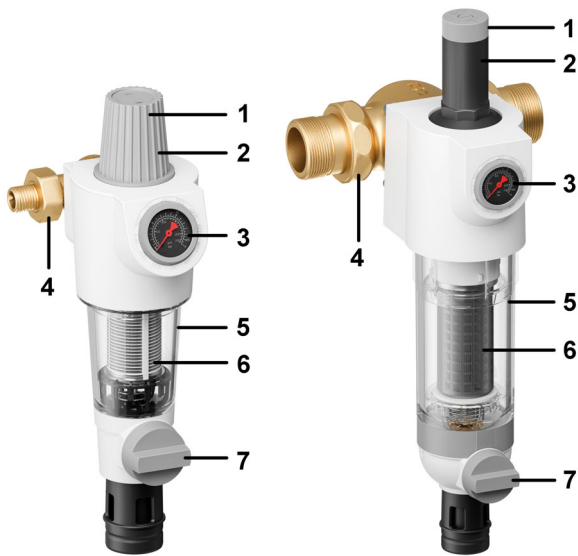


#### Technical Data

Media	
Medium:	Drinking water
Connections/Sizes	
Connection sizes:	1/2" - 2" (with rotatable connector piece)
Pressure values	
Operating pressure range:	1.5 - 16 bar
Max. inlet pressure:	16 bar (up to 12 bar long*-term)
Outlet pressure:	1.5 - 6 bar adjustable
Operating temperatures	
Operating temperature range medium accord. to EN 1567:	5 - 30 °C
Specifications	
Installation position:	Horizontal or vertical, with filter bowl downwards

\* For maintaining the measuring accuracy of the manometer, a continuous maximum pressure load of 12 bar is permitted.

Construction

Overview	Components	Materials
	1 Adjustment handle	High-quality synthetic material
	2 Spring bonnet with internal adjustment screw	High-quality synthetic material
	3 Housing with pressure gauge	<b>FK74CS-LF 1 1/2" - 1 1/4":</b> High-quality synthetic material <b>FK74CS-LF 1 1/2" - 2":</b> Lead-free brass
	4 Rotatable connector piece, flange sealings, connecting nuts and fittings (FK74CS only)	<b>FK74CS-LF 1 1/2" - 2":</b> Lead-free brass
	5 Wrench for filter bowl and spring bonnet	Plastic
	6 Fine filter	Stainless steel
	7 Reverse rinsing handle	Synthetic material
<b>Not depicted components:</b>		
Memory ring		Plastic
Allen key		Stainless steel
Valve insert complete with diaphragm and valve seat		High-quality synthetic material
Clear filter bowl		Shock-resistant, clear transparent synthetic material
Ball valve with drain connection		Lead-free brass (Ball Valve body), Lead-free material (ball), Plastic-durethan (drain adapter)
Diaphragm		EDPM
Sealing washers		EPDM

Method of Operation

The filter combination combines reverse rinsing filter and pressure reducing valve in one appliance.

The filter insert comprises an upper part and a lower combination section. When in the „filtering“ position, the small upper filter is closed so that the water can only pass through the main filter from outside to inside. When the ball valve is opened for reverse rinsing, the filter is pushed downwards until the water supply to the outer side of the main filter is stopped. Simultaneously, the water flow is opened to the upper part of the filter. The water needed for cleaning the filter passes through the upper sieve, the rotating impeller and the main filter from inside to outside. By this means, the filter is fully cleaned over its whole surface area at the full inlet pressure. The filter automatically switches over to the operating position when the ball valve is closed again.

The integral pressure reducing valve functions on a balanced force principle whereby the force exerted by a diaphragm is balanced against the force of an adjustment spring. The inlet pressure has no influence on opening or closing of the valve. Inlet pressure fluctuation does not therefore affect the outlet pressure.

Transportation and Storage

Keep parts in their original packaging and unpack them shortly before use.

The following parameters apply during transportation and storage:

Parameter	Value
Environment:	clean, dry and dust free
Min. ambient temperature:	5 °C
Max. ambient temperature:	55 °C
Min. ambient relative humidity:	25 % *
Max. ambient relative humidity:	85 % *

\*non condensing

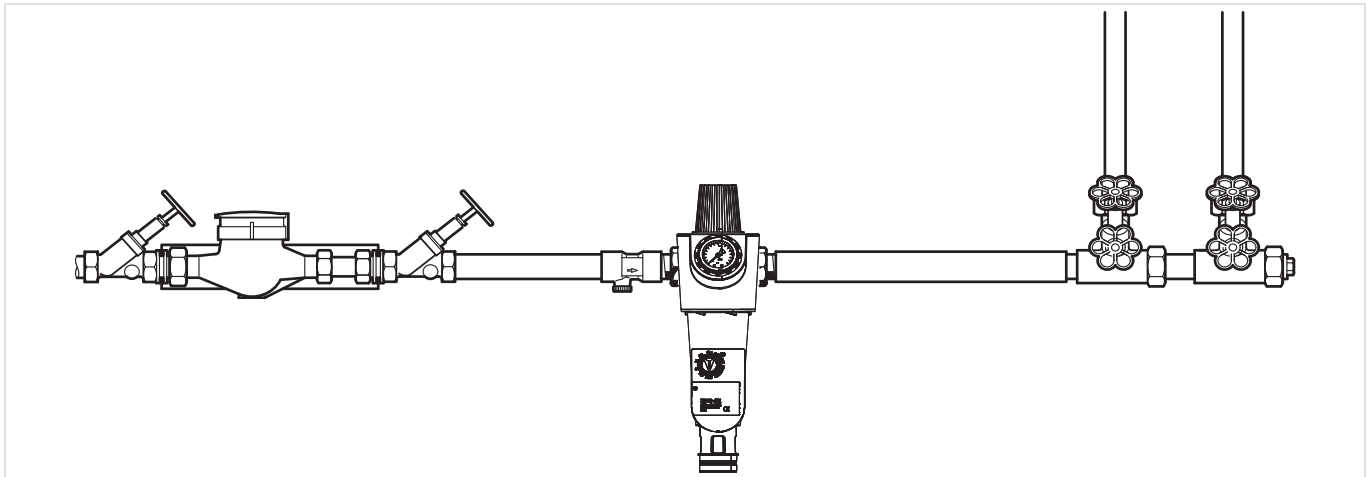
## Installation Guidelines

### Setup requirements

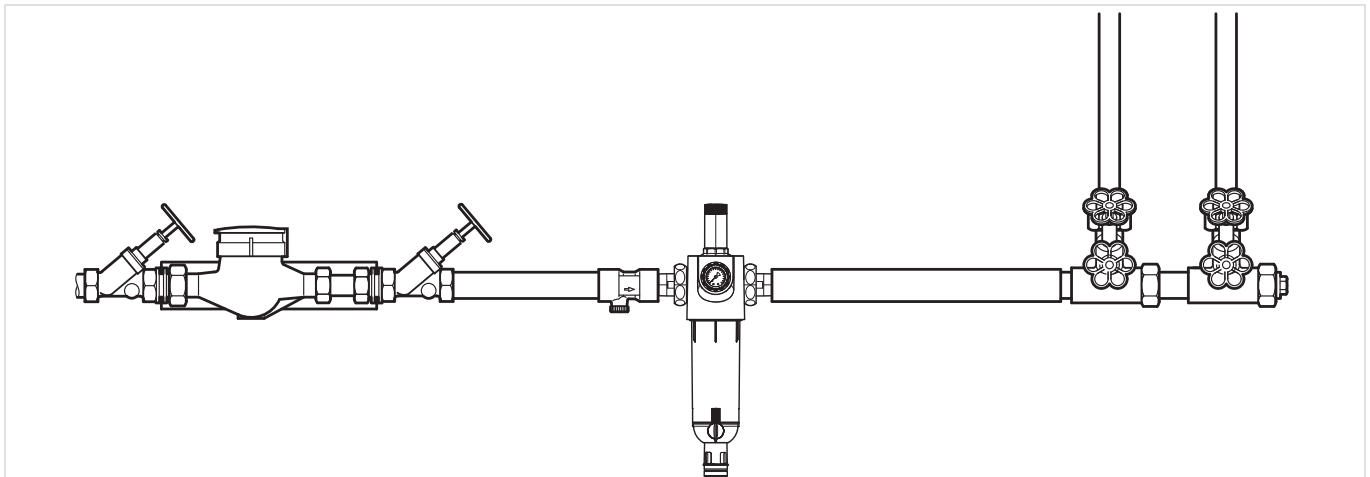
- The installation site has to be frost-proof and the protection of the device from chemicals, paints, detergents, solvents and their vapours and environmental influences must be guaranteed
- Install in horizontal or vertical pipework with filter bowl downwards
  - This position ensures optimum filter efficiency
- Install shut-off valves
- These filters are armatures which need to be maintained regularly
- Ensure good access
  - Pressure gauge can be read off easily
  - Degree of contamination can be easily seen with clear filter bowl
  - Simplifies maintenance and inspection
- It is recommended that a straight section of pipework at least five times the nominal valve size is provided after the filter (according to DIN EN 806-2)
- Fit immediately after water meter
- Related to the EN 806-2 it is recommended to install the filter immediately after the water meter
- In order to avoid flooding, it is recommended to arrange a permanent, professionally dimensioned wastewater connection

### Installation Example

FK74CS-LF 1/2" - 1 1/4"



FK74CS-LF 1 1/2" - 2"

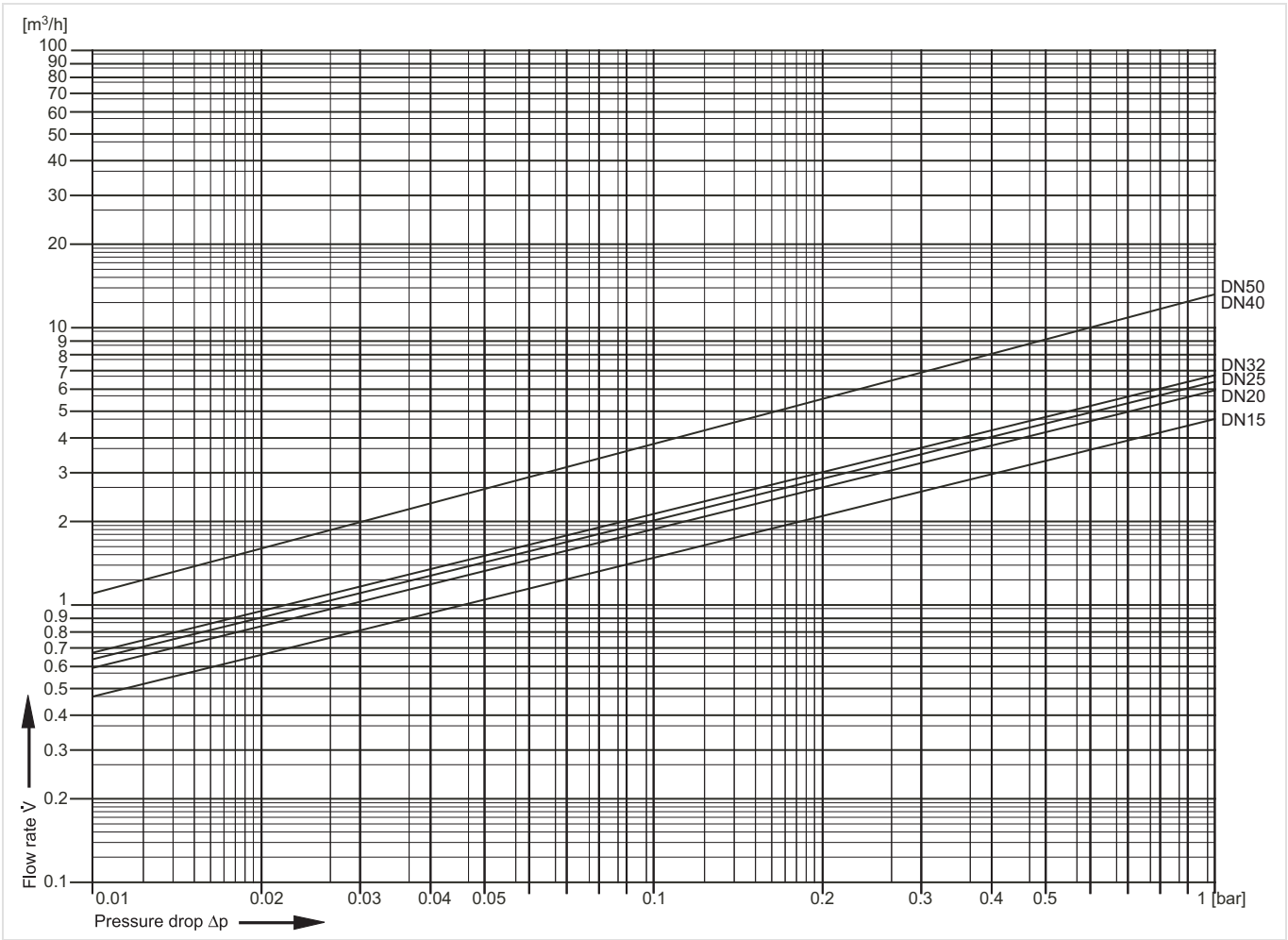


Technical Characteristics

kvs-Values

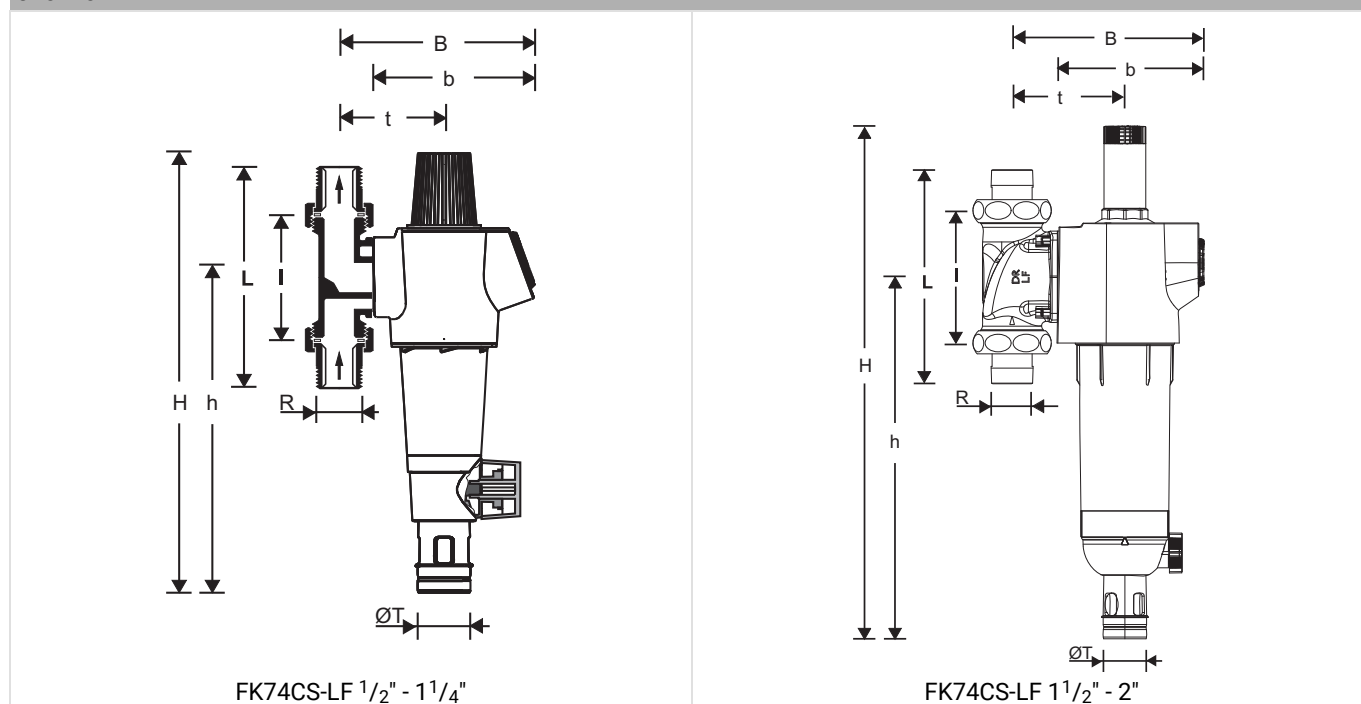
Connection size:	DN 15	DN 20	DN 25	DN 32	DN 40	DN 50
k <sub>VS</sub> -value (m <sup>3</sup> /h):	4.5	5.8	6.2	6.5	11.5	11.5

Pressure drop characteristics



## Dimensions

### Overview



Parameter		Values					
Nominal size diameter:	DN	DN15	DN20	DN25	DN32	DN40	DN50
Connection size:	R	1/2"	3/4"	1"	1 1/4"	1 1/2"	2"
Weight:	kg	2.3	2.3	2.6	2.9	9.753	10.652
Dimensions:	H	415	415	415	415	590	590
	h	298	298	298	298	416	416
	L	150	158	179	197	246	267
	I	90	90	100	105	150	150
	B	178	178	178	182	216	216
	b	150	150	150	150	187	187
	t	92	92	92	96	130	130
	ØT	50	50	50	50	50	50

Note: All dimensions in mm unless stated otherwise.

## Ordering Information

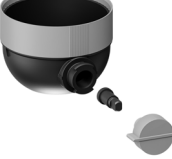
The following tables contain all the information you need to make an order of an item of your choice.

### Options

Connection size:	Filter mesh size:	Rotable connector piece:	Item No.
1/2"	100 µm	Yes	FK74CS-1/2LFAA
3/4"	100 µm	Yes	FK74CS-3/4LFAA
1"	100 µm	Yes	FK74CS-1LFAA
1 1/4"	100 µm	Yes	FK74CS-11/4LFAA
1 1/2"	100 µm	Yes	FK74CS-11/2LFAA
2"	100 µm	Yes	FK74CS-2LFAA
1/2" - 1 1/4"	100 µm	No	FKN74CS-1LFA
1 1/2" - 2"	100 µm	No	FKN74CS-2LFA

## Accessories

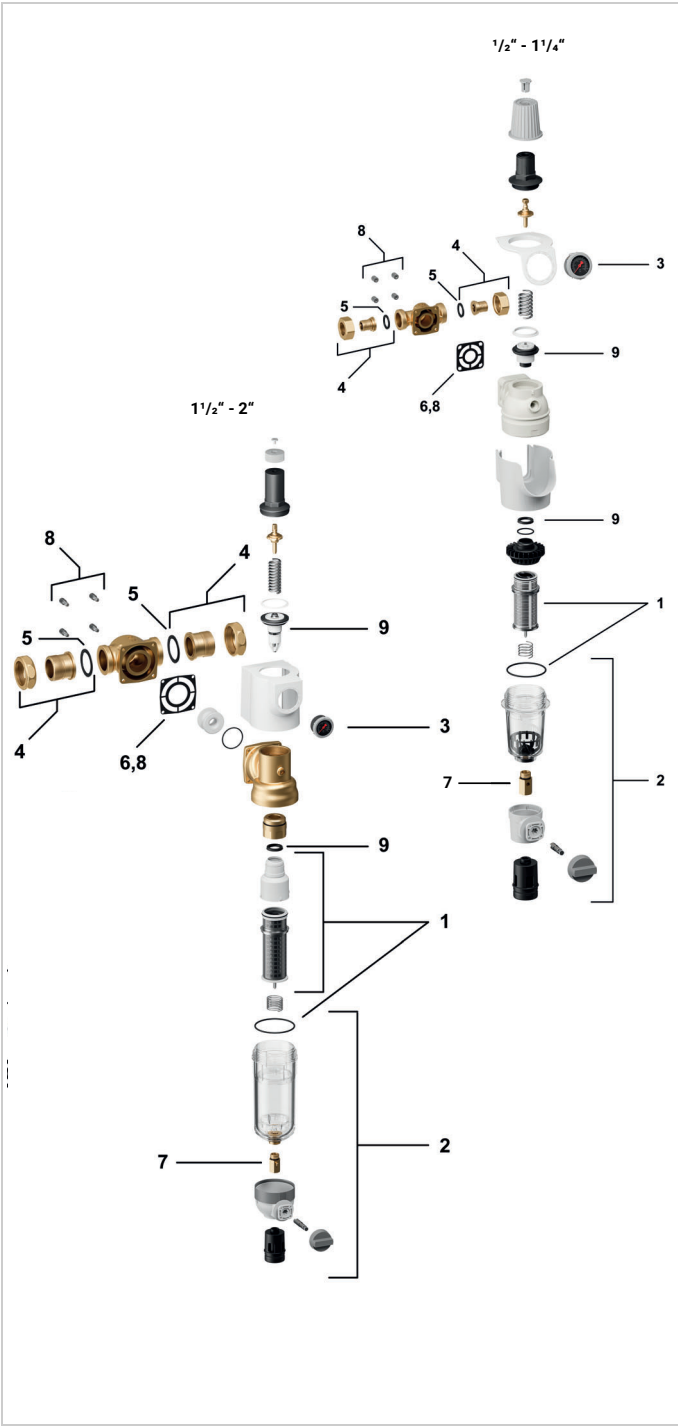
	Description		Dimension	Item No.
	DA74	Rotatable connector piece For connection of retrofit filters and filter combinations		
		DZR brass	1½"	DA74CS-1/2A
		DZR brass	¾"	DA74C-3/4A
		DZR brass	1"	DA74C-1A
		DZR brass	1¼"	DA74C-11/4A
		lead-free	½"	DA74CS-1/2LFA
		lead-free	¾"	DA74CS-3/4LFA
		lead-free	1"	DA74CS-1LFA
		lead-free	1¼"	DA74CS-11/4LFA
		lead-free	1½"	DA74CS-11/2LFA
		lead-free	2"	DA74CS-2LFA
		lead-free, no connection parts	½" - ¾"	DA74CS-1/2LFE
		lead-free, no connection parts	1"	DA74CS-1LFE
		lead-free, no connection parts	1¼"	DA74CS-11/4LFE
		lead-free, no connection parts	1½" - 2"	DA74CS-2LFE
	ZR74CS	Double ring wrench for removing the filter bowl		
			½" + 1¼"	ZR74CS
	ZR10K	Double ring wrench for removing the filter bowl		
			1½" + 2"	ZR10K-11/2
	RR74S	Automatic reverse rinsing actuator For automatic filter cleaning at presettable intervals		
		with ISO-flange F03, 3Nm, 230V, 50Hz, 5W	½" - 1¼"	RR74S-A
	RR11S	Automatic reverse rinsing actuator For automatic filter cleaning at presettable intervals		
		with ISO-flange F03, 5Nm, 230V, 50Hz, 5W, BMS		RR11S-A RR11S-AGB (UK-version)

	URS/URSP	Retrofit kit F*74CS		
		for filter bowl up to May 2025 with back wash actuator RR11S	1/2" - 1 1/4"	URSP-1AR
			1 1/2" - 2"	URS-11/2AR
		for filter bowl from June 2025 on with back wash actuator Z11S	1/2" - 1 1/4"	URSP-1NZ
			1 1/2" - 2"	URS-11/2NZ

Spare Parts

Filter combinations FK74CS / FKN74CS from 2025 onwards

Overview



	Description	Dimension	Item No.
1	Filter insert complete		
	50 µm	1/2" - 1 1/4"	AF74-1C
	100 µm	1/2" - 1 1/4"	AF74-1A
	200 µm	1/2" - 1 1/4"	AF74-1D
	20 µm	1 1/2" - 2"	AF11S-11/2B
	50 µm	1 1/2" - 2"	AF11S-11/2C
	100µm	1 1/2" - 2"	AF11S-11/2A
	200 µm	1 1/2" - 2"	AF11S-11/2D
2	Clear filter bowl		
	lead-free	1/2" - 1 1/4"	KF74CS-1LFA
	lead-free	1 1/2" - 2"	KF11S-11/2LFA
3	Pressure gauge rear connection thread G1/4"		
		0 - 16 bar	M74CS-A16
4	Connection set threaded connection		
	DZR brass	1/2"	VST06-1/2AR
	DZR brass	3/4"	VST06-3/4A
	DZR brass	1"	VST06-1A
	DZR brass	1 1/4"	VST06-11/4A
	lead-free	1/2"	VST74CS-1/2LFA
	lead-free	3/4"	VST06-3/4LFA
	lead-free	1"	VST06-1LFA
	lead-free	1 1/4"	VST06-11/4LFA
	lead-free	1 1/2"	VST74CS-11/2LFA
	lead-free	2"	VST06-2LFA
5	Union seal washer (10 pcs.)		
		3/4"	0901444
		1"	0901445
		1 1/4"	0901446
		1 1/2"	0901447
		2"	0901448
6	Flange seal		
		1/2" - 1 1/4"	5975900
		1 1/2" - 2"	5975901
7	Ball valve complete		
	lead-free		KH11S-1LFA
8	Flange seal incl. screws		
		1 1/2" - 1 1/4"	DS-FX74CS
		1 1/2" - 2"	DS-FX74CS-11/2
9	Valve insert complete		
	lead-free	1/2" - 1 1/4"	D06FA-1LF
	lead-free	1 1/2" - 2"	D06FA-11/2LF

resideo

Ademco 1 GmbH, Hardhofweg 40,  
74821 MOSBACH, GERMANY  
Phone: +49 6261 810

Manufactured for and on behalf of  
Pittway Sàrl, Z.A., La Pièce 6,  
1180 Rolle, Switzerland  
by its authorised representative  
Ademco 1 GmbH

Subject to change. EN0H-1187GE23 R0525  
© 2025 Resideo Technologies, Inc.  
All rights reserved.

For more information  
resideo.com

This document contains proprietary information of Pittway Sàrl and its affiliated companies and is protected by copyright and other international laws. Reproduction or improper use without specific written authorization of Pittway Sàrl is strictly forbidden.